



PERFORMING
UNDER PRESSURE

H A / H G
HIGH PRESSURE
AIR COMPRESSORS





HIGH AIR



- HIGH AIR is a professional compressor manufacturer in the world, located in Shanghai covering an area of 10000 m2 and we have ability to design, manufacture and test high compressors under 400KW .
- We specialize in the design, processing and manufacturing of gas compressors. Our business idea is to offer most reliable compressors, professional and economical solutions.
- We have passed ISO9000, GC, HSE audit. We successfully became Certified suppliers of CNPC, CNOOC and SINOPEC and we have a solid reputation for high quality products.



HIGH AIR Specialists in Medium and High Pressure Compression

For different gas applications



Applications

- High pressure component testing
- Pipeline Testing
- Valve Testing
- Air Die Mold
- Aerospace
- Defence
- Marine
- Seismic

Committed to providing high-quality gas compressor products, the production and processing of core components in HIGH AIR compressors are independently completed within HIGH AIR factory.

Sophisticated processing equipment and rigorous inspection methods ensure the consistent quality of each component.

The careful selection of materials and components ensures that each HIGH AIR compressor operates efficiently and reliably under the most demanding operating conditions.

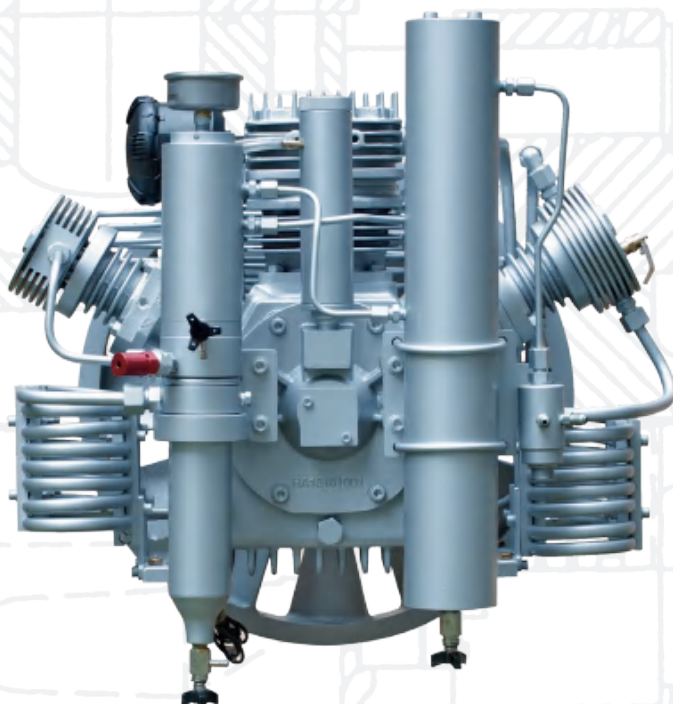
From compressor block, compressor package to gas systems, HIGH AIR offers a diverse range of products and services to meet the diverse needs of customers.



HA Series Compressors

[Overview Product Range]

The HA series medium and high pressure air compressors have small size, light weight, good balance, low noise, and are widely used in various industrial applications.



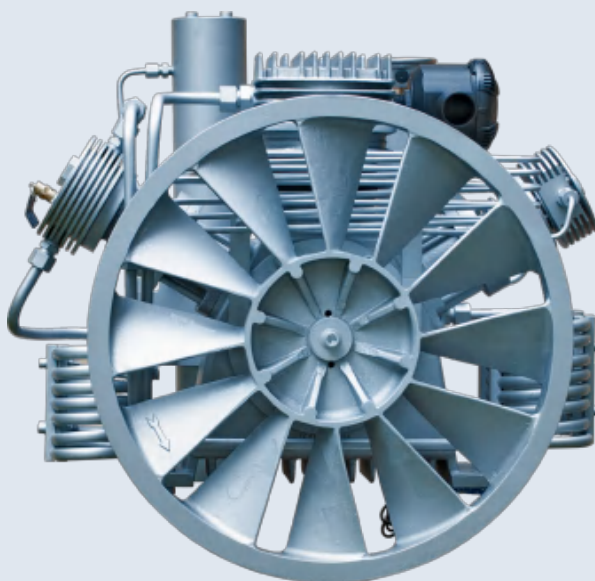
The HA series has a variety of blocks, using aluminum alloy crankcases and cylinder heads, suitable for different medium and high pressure compression fields.

W configuration - max. pressure 350Bar

X configuration - max. pressure 420Bar

The intake filter/silencer effectively reduces intake noise while intercepting impurities in the intake, protecting the compressor.

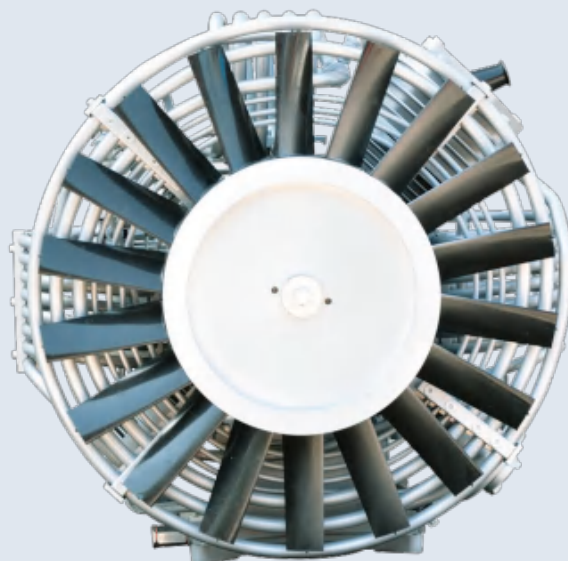
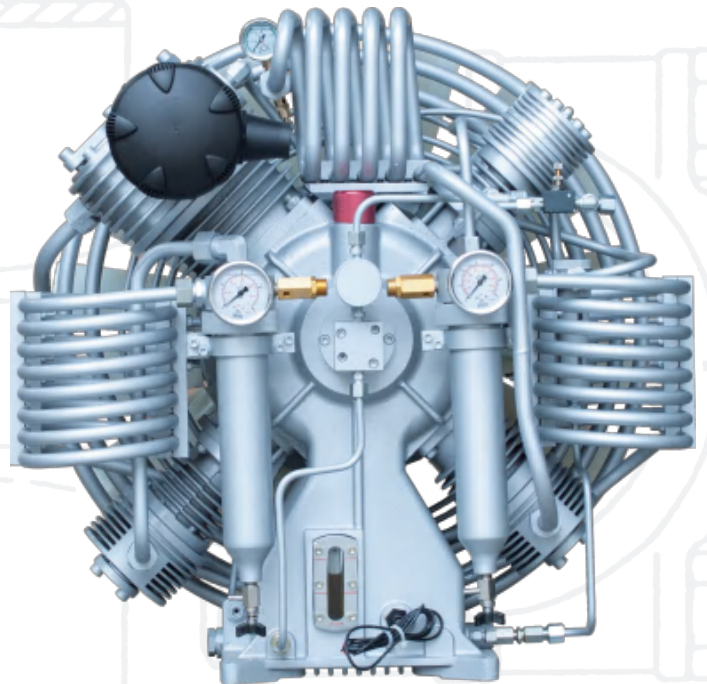
Stainless steel intercoolers and aftercooler, cylinders with deep fins and aluminum cylinder heads, as well as flywheels with true fan blades, all provide good cooling for the unit, reducing its operating and discharge temperatures.



Low-pressure forced feed lubrication system ensures sufficient lubrication of the high-pressure stage. The oil pump is a heavy-duty gear type pump driven by the crankshaft with an oil filter to remove impurities from the oil circuit. The design of the entire lubrication system improves the life of the operating components of the unit.

The crankgear is a heavy-duty design and is precisely balanced to reduce unit vibration and balance connecting rod load, suitable for long-term stable operation.

The entire machine adopts high-quality components and low friction coefficient bearings, providing smooth operation and reducing power consumption; The front and rear bearings of the crankshaft are precisely aligned, extending the life of the crankshaft; Stainless steel valve plate is wear-resistant and has good heat dissipation; Nickel plated seats are more corrosion-resistant.



Various

Design version



COMPACT Design

- Frame integrated design, highly integrated, lightweight and compact.
- Fully automatic drain system and drain collection system, clean and environmentally friendly.
- With electrical control system, economical and durable.
- Optional wheel assembly for easy movement.



SILENT Design

- Vertical design, small footprint.
- The cabinet with super silent design, low noise.
- Aerodynamic design, efficient cooling channel, reserved air duct interface, can lead hot air to the outdoor.
- Fully automatic drain system and drain collection system, clean and environmentally friendly.
- Automatic PLC control system with HMI.
- Optional integrated refrigerated dryer.

[SPECIFICATIONS]

Model	Pressure Bar	Flow m³/min	Power kw	Dimensions mm	Weight kg
COMPACT design					
HA0.1-330/ET	330	0.1	3	706*376*432	49
HA0.5-30/ETC	30	0.5	5.5	1228*593*714	130
HA0.35-80/ETC	50-80	0.35	5.5		136
HA0.3-250/ETC	100-250	0.3	7.5		138
HA0.3-350/ETC	250-350	0.3	7.5		140
HA1-40/ETC	40	1	15		1650*660*950
HA0.85-70/ETC	50-70	0.85	11	345	
HA0.65-150/ETC	80-150	0.65	11	345	
HA0.6-250/ETC	150-250	0.6	11	345	
HA0.6-400/ETC	250-400	0.6	15	350	
SILENT design					
HA0.5-30/ESC	30	0.5	5.5	1100*720*1365	264
HA0.35-80/ESC	50-80	0.35	5.5		270
HA0.3-250/ESC	100-250	0.3	7.5		272
HA0.3-350/ESC	250-350	0.3	7.5		273
HA1-40/ESC	40	1	15	1400*850*1660	490
HA0.85-70/ESC	40-70	0.85	11		485
HA0.65-150/ESC	80-150	0.65	11		485
HA0.6-250/ESC	150-250	0.6	11		485
HA0.6-400/ESC	250-400	0.6	15		490

1. If you have any other requirements, Please contact with HIGH AIR.
2. All parameters are subject to change without prior notice.



High Presssure storage cylinders



High Pressure distributor

HG Series Compressors

[Overview Product Range]

The HG series medium and high pressure air compressors adopt a heavy-duty design, and various models meet diverse application needs.

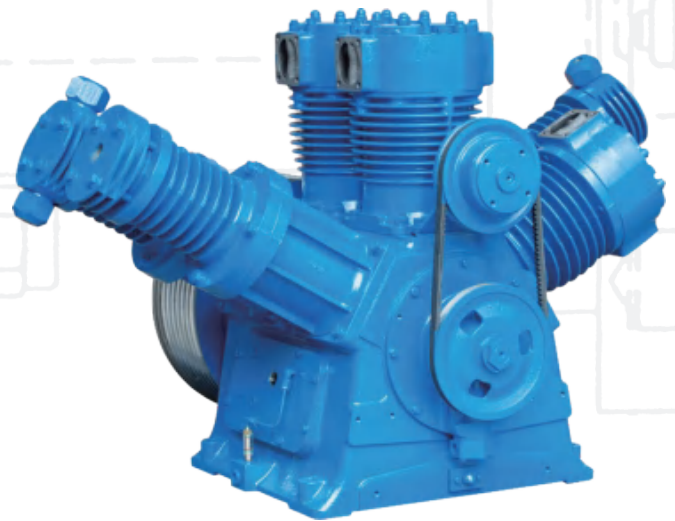
BLOCKS

[Design Features/Compressor]

Air-cooled blocks designed specifically for complex and demanding application environments. Multi stage compression, reducing each stage load, single action, deep fin cylinder, increasing the reliability of unit operation.

The well-chosen high quality suction valves, discharge valves, safety valves are suitable for various operating conditions.

Heavy duty suction filter/silencers protect compressors from dusty air.



Lubrication

[Design Features/Lubrication]

Forced feed lubricating by a gear pump provides perfect lubrication for various moving parts.

The lubricating oil monitoring system ensures the reliable operation of the unit.

The lubricating oil filtration system precisely filters the lubricating oil to ensure the safety of the unit.

Cooling

[Design Features/Cooling]

Deep finned cylinders and cylinder head fins, oversized cooler design, effectively reducing temperature at all stages during operation.

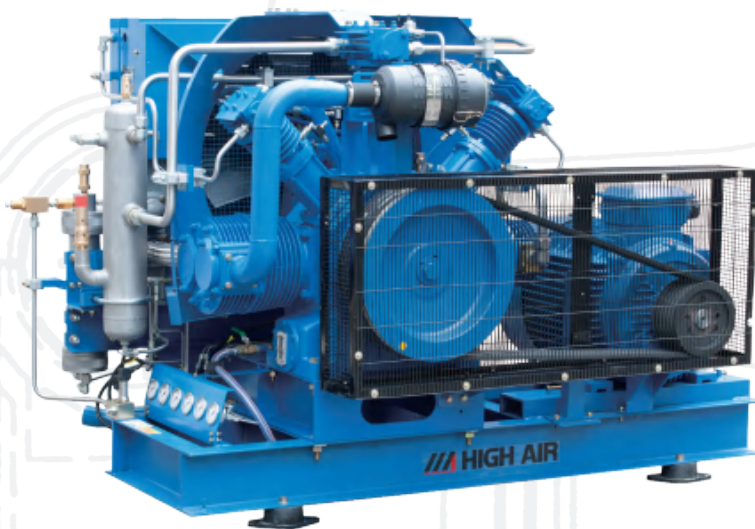
The crankshaft drives a cooling fan to provide forced cooling for the block and coolers.

Air or water cooled coolers can be selected based on actual operating conditions.

SYSTEMS

[Technical Advantages]

HIGH AIR provides standard control systems and can also customize unique control systems according to customer requirements. Thanks to its reliable design, HIGH AIR compressor can operate efficiently and stably in both continuous and intermittent operating conditions.



Unique modular design provides customers with more optimized solutions in terms of technology and economy.

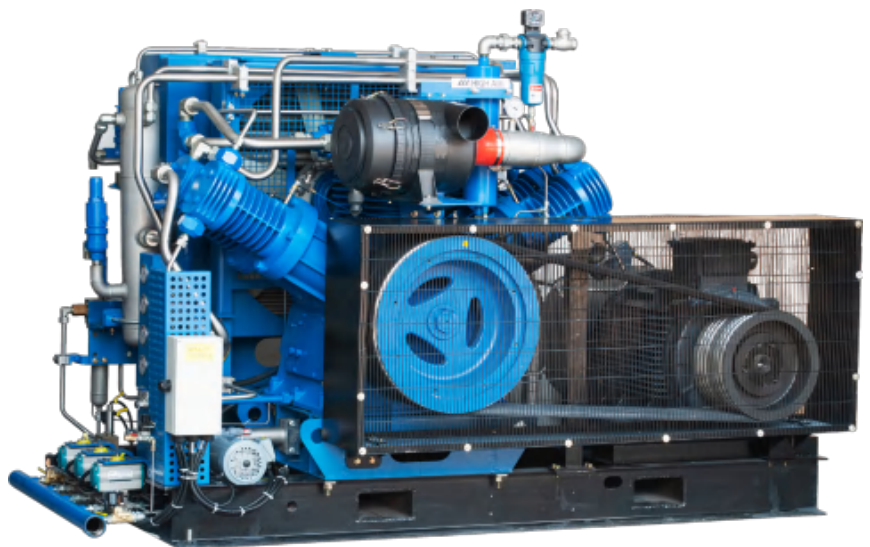
The careful selection of materials and components ensures the efficient and reliable operation of each compressor.

Multiple models are available for selection to meet different applications.

Heavy-duty design, suitable for continuous operating environments.

Optional air cooled or water cooled.

Provide the solution from the blocks, the compressor to the entire system.



HIGH AIR offers field

proven Air Compressors system in skid-mounted

configurations that combine ruggedness with simplicity of
design for low maintenance and long life

[Design Features]

Our universal modular design brings more flexibility and convenience to adjusting the combination of pistons, cylinders, cylinder heads, and valves, enabling us to provide customers with more efficient and economical systems. Our design features and advantages determine that our unit can withstand the test of time and gain user recognition.

- Easy to install and maintain
- Good balance and low vibration
- Low maintenance workload and operating costs
- Low compression ratio and temperature rise
- No special foundation requirements
- High operational efficiency
- Designed for continuous operation, suitable for heavy-duty work
- Max. working pressure is 500Bar
- Low noise

[Turnkey Solution]

- Desiel engine driven
- Motor-engine dual driven
- Power take-off driven
- Direct coupling driven
- Water cooled
- Cabinet design
- Scilent drsign
- Low temperature design
- Explosion-proof design
- Design for marine application



[SPECIFICATIONS]

Model	Pressure Bar	Flow m ³ /min	Motor kw	Dimensions mm	Weight kg
HG1.2-50	50	1.2	18.5	1600×935×1052	350
HG1.5-50	50	1.5	22	1600×1030×1180	560
HG2-50	50	2	30	1800×1000×1200	1150
HG2.5-50	50	2.5	37	1800×1000×1200	1170
HG3-50	50	3	45	2070×1100×1430	1400
HG4-50	50	4	55	2070×1100×1430	1470
HG1.2-70	70	1.2	18.5	1600×935×1052	350
HG1.5-70	70	1.5	22	1600×1030×1180	560
HG2-70	70	2	30	1800×1000×1200	1150
HG2.5-70	70	2.5	37	1800×1000×1200	1170
HG3-70	70	3	45	2170×1310×1460	1350
HG4-70	70	4	55	2270×1310×1460	1550
HG1-100	100	1	22	1600×1030×1180	550
HG2-100	100	2	37	1850×1060×1200	1180
HG3-100	100	3	55	2270×1310×1460	1550
HG4-100	100	4	75	2270×1310×1460	1600
HG6-100	100	6	110	3060×1980×1910	4650
HG8-100	100	8	132	3060×1980×1910	4820
HG1-150	150	1	22	1600×1030×1180	550
HG1.5-150	150	1.5	30	1800×1140×1200	1050
HG2-150	150	2	37	1800×1140×1200	1100
HG3-150	150	2.8	55	2220×1280×1460	1600
HG5-150	150	5	90	2420×1650×2130	3000
HG6-150	150	6	110	3060×1980×1910	4650
HG7-150	150	7	132	3060×1980×1910	4820
HG1-250	250	1	22	1600×1030×1180	550
HG1.5-250	250	1.5	37	1800×1140×1200	1100
HG2-250	250	2	45	2220×1280×1460	1600
HG3-250	250	2.8	55	2220×1280×1460	1600
HG4-250	250	4	90	2420×1650×2130	3000
HG5-250	250	5	110	3130×2140×1910	4800
HG6-250	250	6	132	3130×2140×1910	5000
HG1-350	350	1	22	1600×1030×1180	550
HG1.5-350	350	1.5	37	1850×1060×1200	1180
HG2-350	350	2	45	2300×1280×1430	1500
HG2.5-350	350	2.5	55	2300×1280×1430	1570
HG4-350	350	4	90	2420×1650×2130	3000
HG5-350	350	5	110	3130×2140×1910	4800
HG6-350	350	6	132	3130×2140×1910	5000
HG1.5-400	400	1.5	37	2300×1280×1430	1470
HG2-400	400	2	55	2300×1280×1430	1500
HG4-400	400	4	90	2420×1650×2130	3000
HG5-400	400	5	110	3130×2140×1910	4800
HG6-400	400	6	132	3130×2140×1910	5000

• All size parameters are for air-cooled belt drive units.

• All parameters are subject to change without prior notice.

*FOR MORE THAN 30 YEARS
WE'VE BEEN FINDING BETTER WAYS
TO COMPRESS AIR & GAS*

**HIGH PRESSURE
HIGH QUALITY
HIGH AIR**



HIGH AIR MACHINERY (SHANGHAI) CO., LTD.

155 Tinghua Road, Jinshan, Shanghai, P.R.C.

Tel: 86-21-6089 2089

Fax: 86-21-6089 2120

E-mail: sale@highair.co

Web: <http://www.highair.co>

